

CARPENTERS, ELECTRICAL WORKERS

Solvay Job-Installing of Mercury Arc Cells—June 11, 1953

INTERNATIONAL BROTHERHOOD OF ELECTRICAL WORKERS

June 11, 1953

Memorandum of Understanding on Solvay Job-installing of Mercury Arc Cells

In order to promote the installation of this equipment the various crafts have stated that they are only conceding this in order to get some kind of agreement to promote the job. This is to apply to this job only. Later if there is some mutual understanding between the crafts we expect it to be abided by. The various crafts involved must be given a copy of any agreement.

MILLWRIGHTS—will place base plates on the foundations. The placing of the insulators will be work of the **ELECTRICIANS**.

MILLWRIGHTS—will place bearings and supports.

MILLWRIGHTS—will align and level to the base of the denuders.

BOILERMAKERS—will install denuders.

MILLWRIGHTS—will adjust denuders.

MILLWRIGHTS—will install spacers between denuders and bed plates.

IRON WORKERS—will handle electrode plates from warehouse to tinning and from tinning to stock pile.

ELECTRICIANS—will tin electrode plate.

BOILERMAKERS—will handle electrode plates from stockpile to assembly of sides.

BOILERMAKERS—will assemble side plates and set in place.

BOILERMAKERS—will make water test.

PIPEFITTERS—will handle piping and pipe supports.

ELECTRICIANS—will adjust and align electrode plate assembly.

MILLWRIGHTS—will put turnbuckles on, **ELECTRICIANS** to make adjustment.

ELECTRICIANS—will install electrodes and top of tank.

MILLWRIGHTS—will assemble pumps and castings as agreed between the two crafts.

PIPEFITTERS—will install castings and pumps as agreed.

PIPEFITTERS—will make all pipe connections to and from call.

PIPEFITTERS—will install hydrogen cooler.

ELECTRICIANS—shall handle motors.

The connecting and aligning of direct driven motors shall be done by **MILLWRIGHTS**.

CARPENTERS, ELECTRICAL WORKERS

Handling of Electrical Equipment—June 1, 1963

AGREEMENT BETWEEN THE UNITED BROTHERHOOD OF CARPENTERS AND JOINERS OF AMERICA AND THE INTERNATIONAL BROTHERHOOD OF ELECTRICAL WORKERS

AGREEMENT

This Memorandum of Understanding agreed to this 1st day of June 1963, by and between the International Brotherhood of Electrical Workers and the United Brotherhood of Carpenters and Joiners of America, represented by the Committees appointed by the Presidents of the two International Unions for the purpose of eliminating jurisdictional disputes and promoting harmony and cooperation between the members of the International Brotherhood of Electrical Workers and the United Brotherhood of Carpenters and Joiners of America, and the Committees from the two International Unions hereby settle the questions existing between them which have provoked jurisdictional disputes in the construction industry.

It is understood and agreed that all decisions and agreements of record affecting the two International Unions shall be considered operative and effective by each International Union, except as clarified in this Memorandum of Understanding.

It is further agreed that this Memorandum of Understanding pertains solely and only to construction work and does not pertain to maintenance of various items of equipment used in the manufacture of electric power or in the operation of power plants and distribution systems by utilities, and it is drawn for the purpose of clarifying jurisdictional disputes arising in the construction industry.

It is expressly understood and agreed that this agreement shall not relate to or have any bearing on jurisdictional disputes that may exist, or in the future occur, between either of the parties hereto with any other international union or subordinate body thereof.

Handling of Electrical Equipment and Electric Motors

The handling of all electrical equipment and electric motors covered by this agreement to point of installation or point adjacent thereto, including the placing on anchor bolts thumb tight of insu-

lated bearing pedestals, and the connecting of power thereto shall be the work of the Electrical Workers.

Electrical Motors

The setting and fastening of motors direct to motor driven machinery where shaft of motor is directly connected to driven shaft of equipment to be operated, and fastened together with flanges or flexible couplings shall be considered as direct connected, and shall be the work of the Millwrights, including movement of motor on base for drilling, tapping and alignment purposes.

The setting of all motors connected to driven machinery by means of belts, sprockets, chains or gear shall be the work of the Electrical Workers, including the installation of belts, sprockets, chains or gear to a running test. It is understood that the necessary pulley, sprocket or gear to be installed on driven end of equipment to be operated shall be installed by the Millwrights.

It is further provided where precision alignment is required, such as steel pinions and steel gears, etc., the alignment shall be the work of the Millwrights.

Direct Drive Motors—Disassembled

The installation, leveling and aligning of base or sole plates shall be the work of the Millwrights. Base plates or sole plates used solely for air gapping shall be installed by the Electrical Workers.

Leveling, aligning and securing of bearing pedestals shall be the work of the Millwrights.

The drilling, tapping and doweling of base to receive stator, pedestals and bearings shall be the work of the Millwrights.

The setting and fitting of bearings shall be the work of the Millwrights.

Indirect Drive Motors—Disassembled

All work involving the assembly of indirect drive motors shall be the work of the Electrical Workers, including motor bases, skid rails, brackets or supports.

Gear Head Motors

1. (a) A gear head motor which is secured by bolting through the feet of the motor (Picture 1)
- (b) A gear head motor which is secured by bolting partly through the feet of the motor and partly through the feet of the reducer (Picture 2)
- (c) A gear head motor where the motor is comparable in size or larger than reduction gear case and is secured by bolting through the feet of the reducer (Pictures 3 and 4)

1 (a), (b) and (c) shall be installed in the following manner:

The Electrical Workers shall install the indirect connected. The Millwrights shall install the direct connected. (Direct and indirect connected shall be determined by the connection from the output shaft of the reducer.)

2. Gear head variable speed reducers such as U.S. Varidrive, Link Belt P. I. V. drives, Reeves Vari-Speed Motordrives, Worthington Variable Speed Drives, etc. (Pictures 5 and 6) shall be installed by the Millwrights.

3. Gear head motors that have the coupling or fluid drive exposed between the motor and the reducer (Picture 7) shall be installed by the Millwrights.

4. Gear head motorized drive units where the motor is mounted on or secured to the reduction gear case and motor is smaller than the motorized drive (Picture 8) shall be aligned, leveled and secured by the Millwrights.

Motor Generator Sets

Motor generator sets assembled as a unit shall be the work of the Electrical Workers. After motor generator sets are installed and it is necessary to realign direct connecting coupling, the alignment shall be the work of the Millwrights which may require slight movement of the motor or generator or both.

Multi Units Assembled

Multi Units assembled as a unit will be handled on the same basis as motor generator sets.

Disassembled

Final securing, leveling and alignment of units and couplings is the work of the Millwrights.

Air Gapping

All air gapping shall be the work of the Electrical Workers.

Motor Bases

Fabrication, refabrication and installation of bases, base plates, brackets and supports for direct connected motors shall be the work of the Millwrights.

Fabrication, refabrication and installation of bases, base plates, brackets and supports for indirect connected motors shall be the work of the Electrical Workers.

Syntron and Similar Magnetic Type Vibrating Feeders

Complete package units shall be erected by the Millwrights. Magnetic type vibrating feeders without magnetic unit attached shall be erected by the Millwrights.

Magnetic units are to be installed by the Electrical Workers.

Air gap shall be adjusted by the Electrical Workers.

If package unit is disassembled for purposes of installation, Electrical Workers will remove magnet unit and reinstall.

Installation of Foul Line and Photocell Electrical Equipment on Bowling Alleys

The cutting of holes, or any cutting of wood on the alleys shall be performed by the Carpenters.

The installation of all electrical equipment in connection with installation of foul line and photocell electrical equipment on bowling alleys shall be performed by the Electrical Workers.

Wood Backing for Lighting Fixtures and Electrical Equipment

Wood backing for lighting fixtures and for supporting electrical equipment shall be installed by the Electrical Workers.

Where power equipment is used for cutting, the cutting shall be done by the Carpenters.

Self-supporting backing, such as partitions or where framing or additional studding is to be erected, shall be installed by the Carpenters.

It is understood and agreed that the agreement between the two organizations entered into this first day of June, 1963, will continue in effect from year to year unless one or both parties to the agreement notifies the other in writing ninety (90)

days prior to the anniversary date of the agreement of their desire to modify or terminate the agreement.

The party notifying the other of its desire to modify or terminate the agreement must also (1) set out in writing those items to be modified or added, and (2) if notification to terminate the agreement, submission of reasons for same.

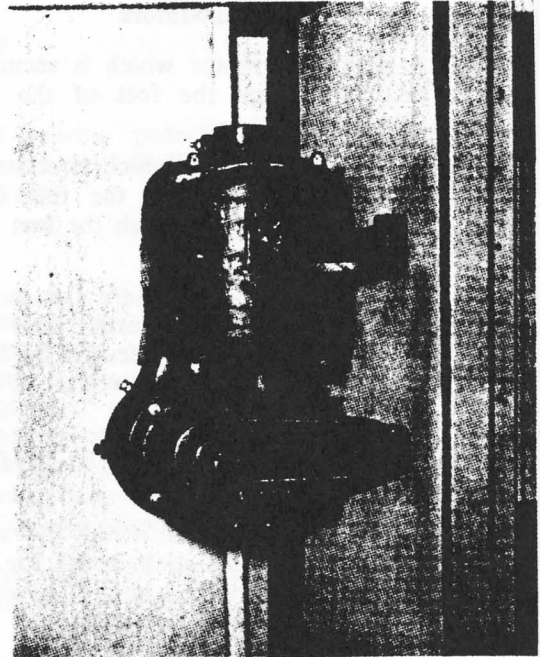
It is further agreed by both organizations signatory to this agreement that a meeting of committees of each organization will be held at least twice each calendar year and committees in session may by mutual agreement add to or delete provisions of this agreement, subject to the approval of the two International Presidents.

UNITED BROTHERHOOD
OF CARPENTERS AND
JOINERS OF AMERICA

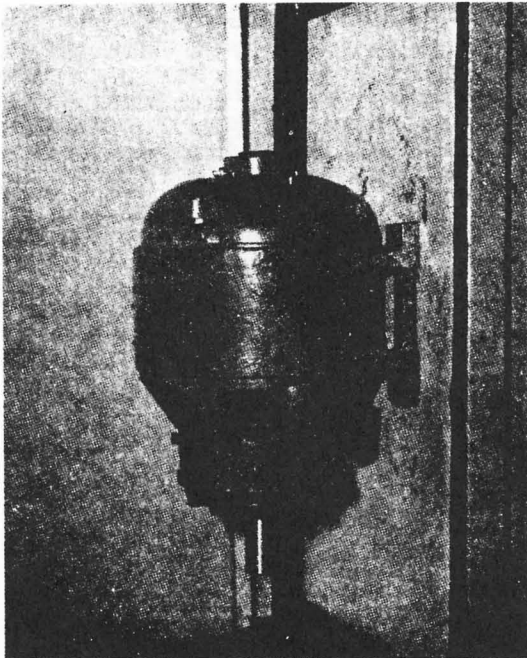
/s/ M. A. HUTCHESON
General President

INTERNATIONAL
BROTHERHOOD OF
ELECTRICAL WORKERS

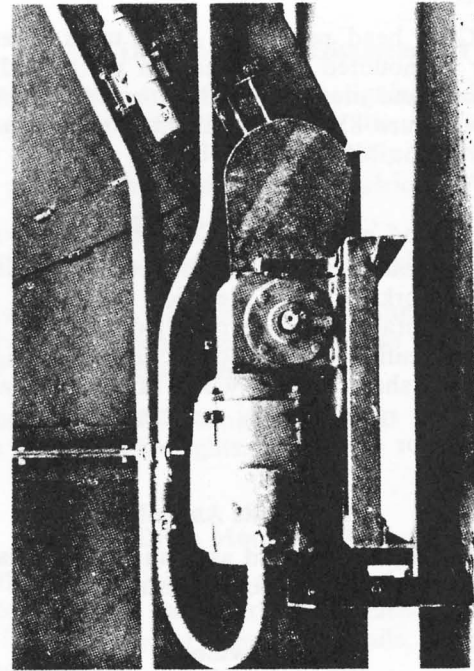
/s/ GORDON M.
FREEMAN
International President



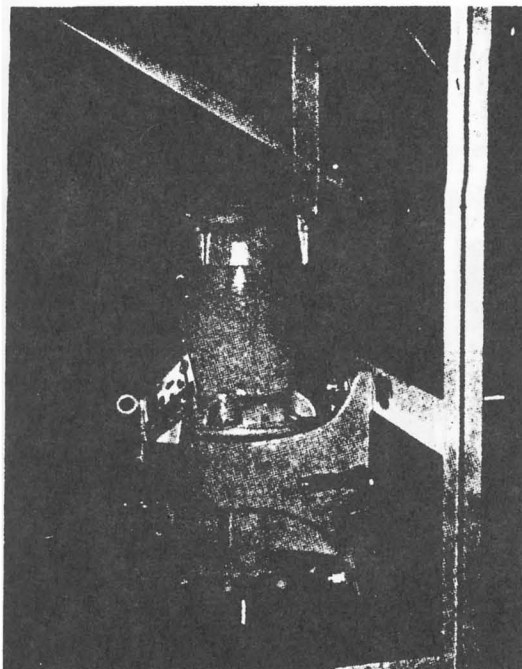
PICTURE 2



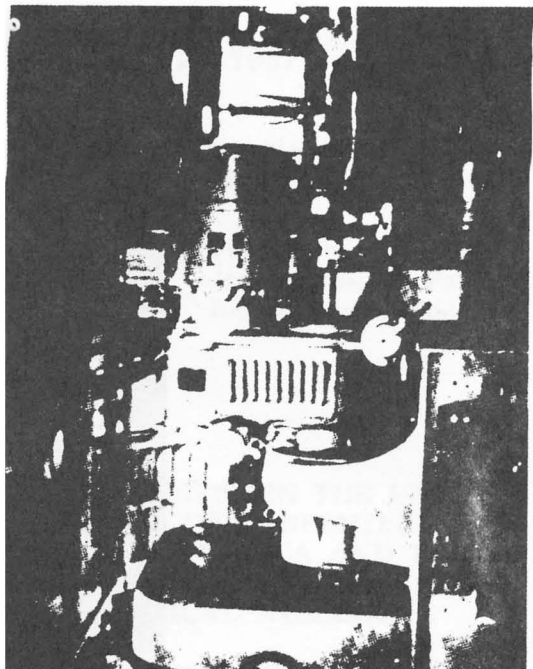
PICTURE 1



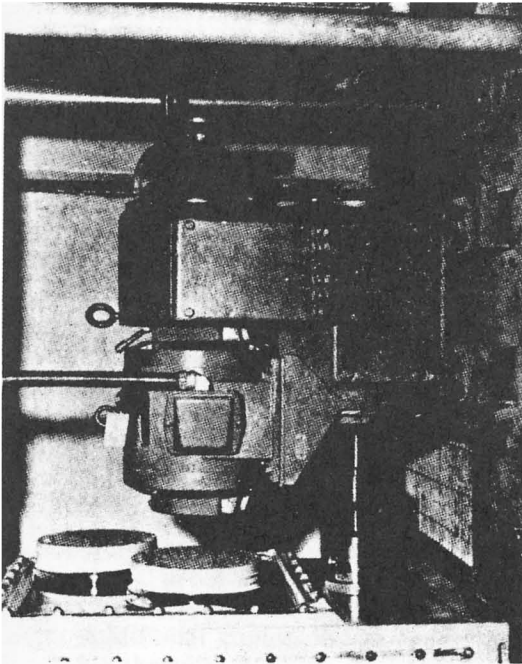
PICTURE 3



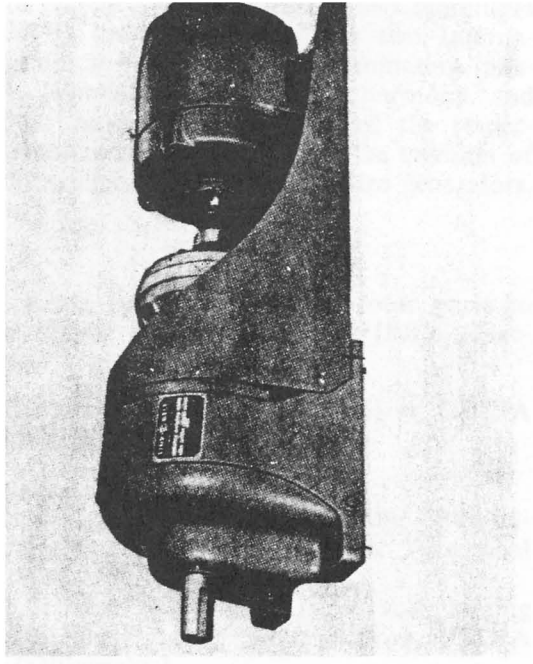
PICTURE 4



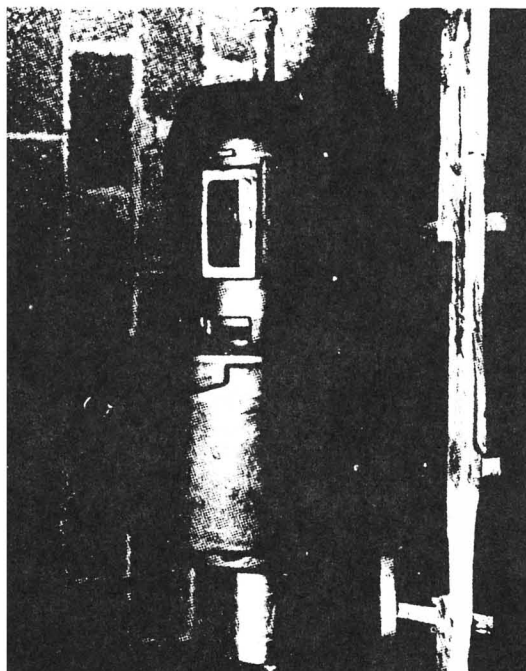
PICTURE 6



PICTURE 5



PICTURE 7



PICTURE 8

CARPENTERS, ELECTRICAL WORKERS

Vertical Disassembled Motors and Hydro Generators—July 20, 1967

September 7, 1967

TO ALL INSIDE LOCAL UNIONS

Dears Sirs and Brothers:

Enclosed is a recently agreed Understanding between the United Brotherhood of Carpenters and Joiners of America and the International Brotherhood of Electrical Workers over Vertical Disassembled Motors and Hydro Generators.

This specific item has been of much concern to this office for a number of months. The committees have been able to agree to this assembly procedure. This agreement would in no way affect agreements that exist between the IBEW and other International Unions. Each agreement stands on its own.

The following has been agreed to by the offices of the UBCJA and the IBEW:

“This division of work on the erection of vertical disassembled motors and hydro generators has been of much concern and required much discussion and time between the United Brotherhood of Carpenters and Joiners of America and the International Brotherhood of Electrical Workers. This agreement on the division of work shall be used on all installations from this date forward.

“Should a unit be in the process of assembly based on an assignment different from the enclosed, that particular unit should be completed on that basis unless the two crafts on a local level can come to a point of division during the assembly when this procedure can be started at the mutually agreed point.

“Otherwise, when a new unit starts after this date the enclosed procedure must be used. Should any question or misunderstanding arise regarding the assembly operation, this Memorandum of Understanding dated July 20, 1967, shall be used for a basis of settlement by the two organizations.”

Should any questions arise about the implementing of this procedure, you should contact your respective Vice President's office for such assistance. Additional copies of this Understanding are available through the Vice President's office.

This Understanding is subject to the terms and conditions of the Agreement of June 1, 1963.

Best wishes.

Fraternally yours,
/s/ GORDON M. FREEMAN
International President

GMF:ek
opeiu #2
Enclosure
cc—IVP's

AGREEMENT BETWEEN THE UNITED BROTHERHOOD OF CARPENTERS AND JOINERS OF AMERICA AND THE INTERNATIONAL BROTHERHOOD OF ELECTRICAL WORKERS

Vertical Disassembled Motors and Hydro Generators

AGREEMENT

Form 325

This Memorandum of Understanding agreed to this 20th day of July 1967, by and between the International Brotherhood of Electrical Workers and the United Brotherhood of Carpenters and Joiners of America, represented by the Committees appointed by the Presidents of the two International Unions for the purpose of eliminating jurisdictional disputes and promoting harmony and cooperation between the members of the respective International Unions, covering the erection of vertical disassembled motors and hydro generators.

Procedure

1. Unloading and moving of all rotor parts to approximate point of assembly, IBEW (Electrical Workers).
2. Install foundation caps (sole plates), UBCJA (Millwrights).
3. Stator assembly procedure.
 - (a) Unloading and moving to point of installation and assembly, IBEW (Electrical Workers).
 - (b) Cleaning mechanical parts and bolting and doweling of stator partings, UBCJA (Millwrights).

- (c) Unloading, moving and installation of stator coils, IBEW (Electrical Workers).
- (d) Temporary aligning and leveling of assembled stator, UBCJA (Millwrights).
- 4. Install shaft on pedestal, UBCJA (Millwrights).
- 5. Install rotor spider on shaft, UBCJA (Millwrights).
- 6. Prepare and stack rotor laminations—torque studs, UBCJA (Millwrights).
- 7. Preparing, moving and hanging of pole pieces in slots, IBEW (Electrical Workers).
 - (a) All preparatory work on the pole keys and the driving of the pole keys, UBCJA (Millwrights).
 - (b) Major routing and/or drilling of pole spacer blocks, UBCJA (Millwrights).
 - (c) Final preparing and installing of pole insulator spacer blocks, IBEW (Electrical Workers).
- 8. All electrical connections, IBEW (Electrical Workers).
- 9. Prepare and install lower bearing bracket and bearing, UBCJA (Millwrights).
- 10. Install air deflectors on stator and rotor, UBCJA (Millwrights).
- 11. Install brake plates and shoes, UBCJA (Millwrights).
- 12. Install air housing, bolting and doweling, UBCJA (Millwrights).
- 13. The moving and placing of assembled rotor into permanent position shall be done by, Composite Crew.
 - (a) The aligning and coupling of the rotor shaft, UBCJA (Millwrights).
- 14. Prepare and install upper bearing bracket and bearing, UBCJA (Millwrights).
- 15. Air gap stator to rotor, IBEW (Electrical Workers).
- 16. Uncrate and clean exciter rotor shaft, UBCJA (Millwrights).
 - (a) Moving and placing of exciter rotor shaft to point of installation, IBEW (Electrical Workers).
 - (b) Final alignment and bolting, UBCJA (Millwrights).
- 17. Uncrating and cleaning of exterior or outside of exciter rotor, IBEW (Electrical Workers).
 - (a) Cleaning interior of exciter rotor, UBCJA (Millwrights).
 - (b) Installation of heaters and the handling of exciter rotor to point of installation, IBEW (Electrical Workers).
 - (c) Final alignment and bolting, UBCJA (Millwrights).
- 18. Handle upper and lower exciter housings to point of installation, IBEW (Electrical Workers).
 - (a) Final alignment, UBCJA (Millwrights).
- 19. Air gap exciter stator to exciter rotor, IBEW (Electrical Workers).
 - (a) Bolting and doweling of exciter housing, UBCJA (Millwrights).
- 20. Prepare and install brush and slip ring assembly, IBEW (Electrical Workers).
- 21. All electrical connections and electrical testing, IBEW (Electrical Workers).
- 22. Moving and placing of the permanent magnet generator, IBEW (Electrical Workers).
 - (a) Final alignment and bolting, UBCJA (Millwrights).
- 23. On all units covered by this agreement “start up” and “run in” shall be performed by a Composite Crew.

This is a final agreement approved by the Joint Committee and supersedes all previous Committee understandings and is subject to the terms of changing or terminating as provided in the Agreement of June 1, 1963.

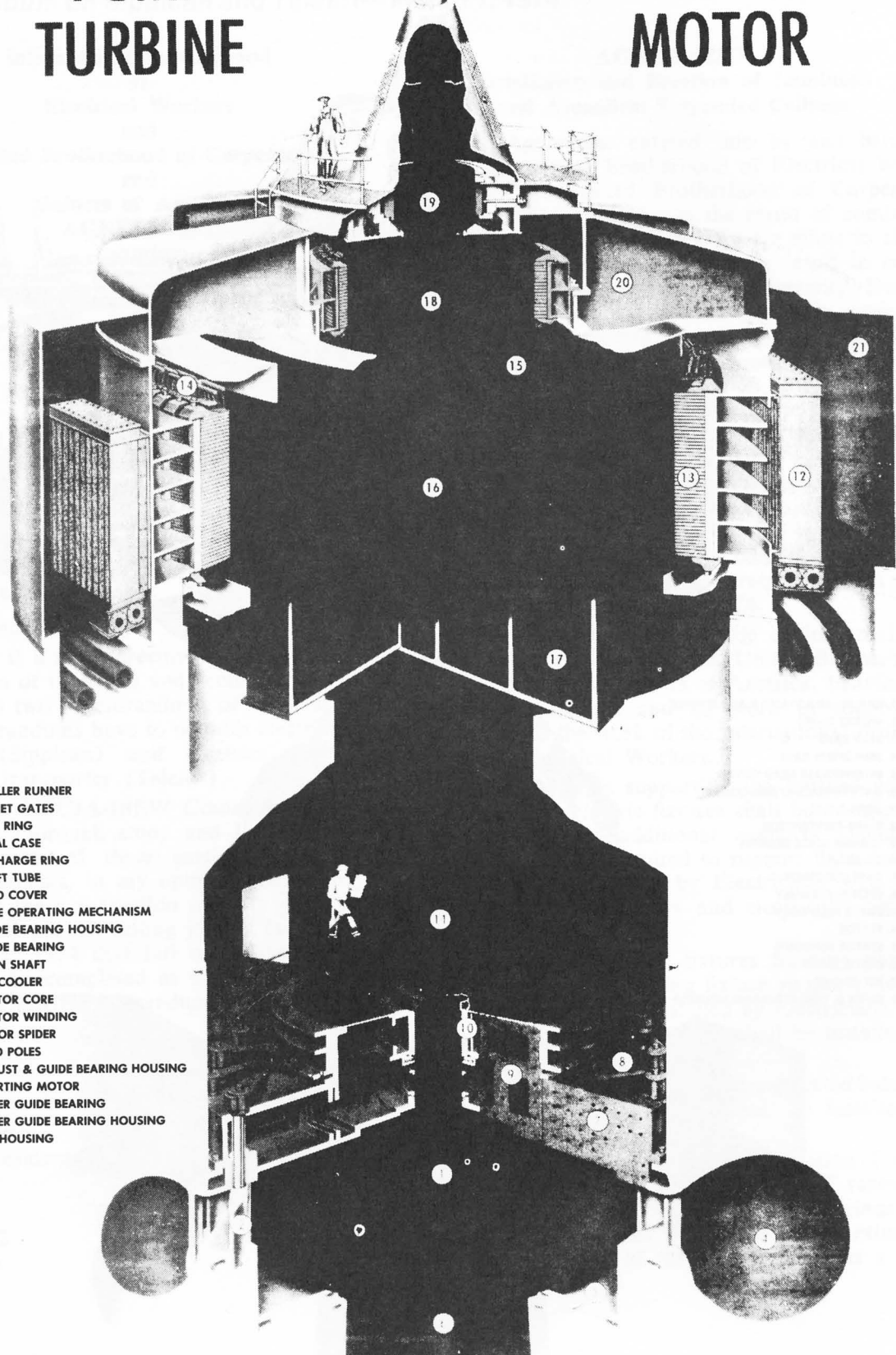
**UNITED BROTHERHOOD
OF CARPENTERS AND
JOINERS OF AMERICA**

/s/ M. A. HUTCHESON
General President
/s/ C. A. SHIREY
/s/ PATRICK J. CAMPBELL
/s/ W. E. MCDANIELS
/s/ ROBERT LAING

**INTERNATIONAL
BROTHERHOOD OF
ELECTRICAL WORKERS**

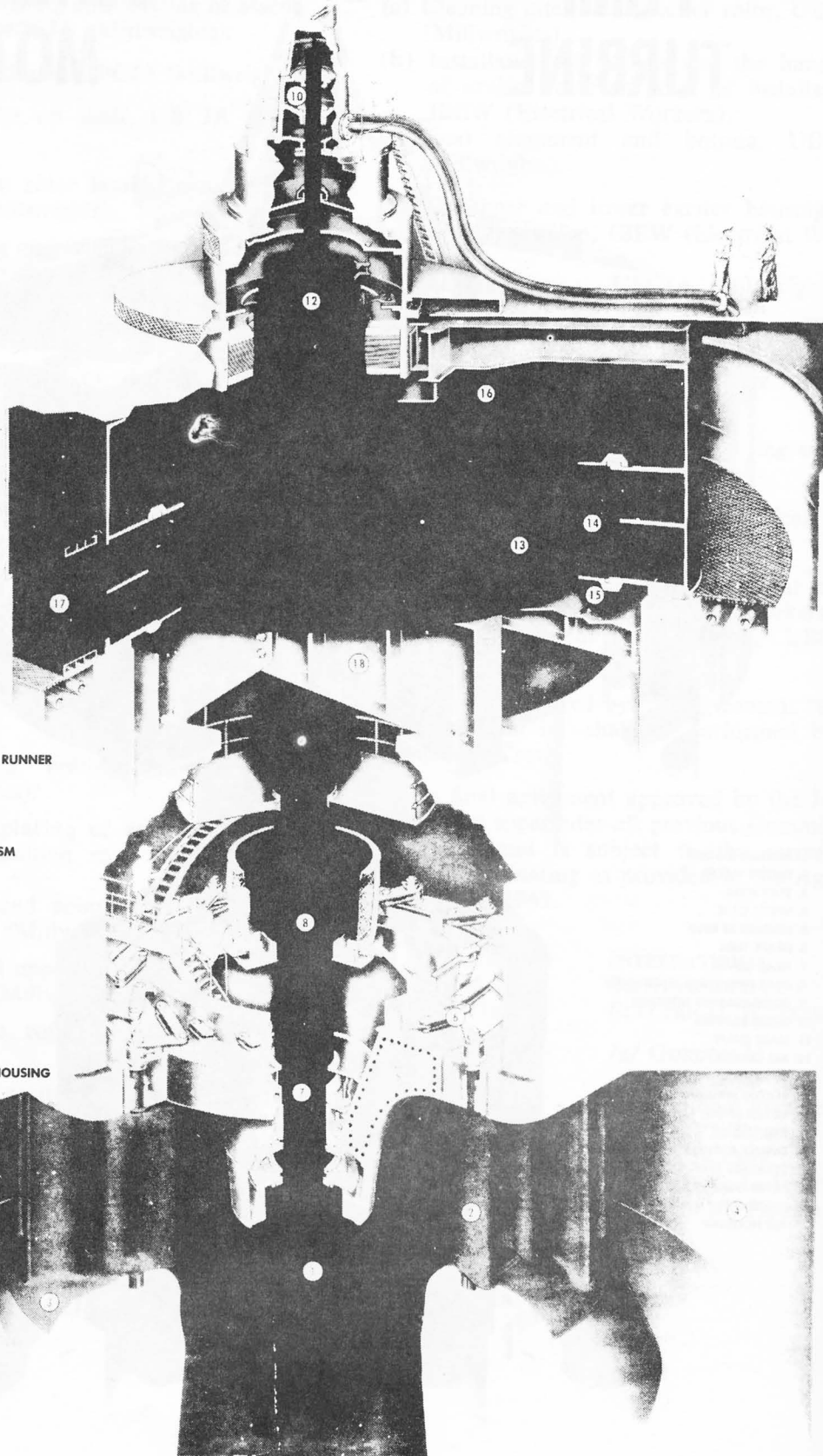
/s/ GORDON M.
FREEMAN
International President
/s/ JOHN J. REGAN
/s/ F. E. CLARK
/s/ MARCUS L. LOFTIS
/s/ JOHN M. PARKER

PUMP and GENERATOR MOTOR



1. IMPELLER RUNNER
2. WICKET GATES
3. STAY RING
4. SPIRAL CASE
5. DISCHARGE RING
6. DRAFT TUBE
7. HEAD COVER
8. GATE OPERATING MECHANISM
9. GUIDE BEARING HOUSING
10. GUIDE BEARING
11. MAIN SHAFT
12. AIR COOLER
13. STATOR CORE
14. STATOR WINDING
15. ROTOR SPIDER
16. FIELD POLES
17. THRUST & GUIDE BEARING HOUSING
18. STARTING MOTOR
19. UPPER GUIDE BEARING
20. UPPER GUIDE BEARING HOUSING
21. AIR HOUSING

HYDRAULIC TURBINE GENERATOR UNIT



- 1. KAPLAN-ADJUSTABLE BLADE RUNNER
- 2. WICKET GATES
- 3. STAY RING
- 4. SEMI-SPIRAL CASE
- 5. INTERMEDIATE HEAD COVER
- 6. GATE OPERATING MECHANISM
- 7. MAIN SHAFT
- 8. BLADE SERVOMOTOR
- 9. TURBINE GUIDE BEARING
- 10. OIL HEAD
- 11. GATE SERVOMOTOR
- 12. EXCITER ASSEMBLY
- 13. ROTOR FIELD COILS
- 14. STATOR
- 15. STATOR WINDINGS
- 16. ROTOR SPIDER
- 17. AIR COOLER
- 18. GUIDE & THRUST BEARING HOUSING

CARPENTERS, ELECTRICAL WORKERS

Installation and Erection of Luminous and Acoustical Suspended Ceilings—and Memorandum on Sippican and Telelift—March 1, 1974

**International Brotherhood
of
Electrical Workers
and
United Brotherhood of Carpenters
and
Joiners of America**

AGREEMENT

**covering
Installation and Erection of Luminous and
Acoustical Suspended Ceilings**

**MEMORANDUM OF UNDERSTANDING
covering**

**Electrical Floor Assembly
and**

Electrical Automated Inter-Office Transporter

International Brother-
hood of Electrical
Workers

United Brotherhood of
Carpenters and
Joiners of America

To: Construction Local Unions
United States and Canada

Dear Sirs and Brothers:

Enclosed is a new agreement on the installation and erection of luminous and acoustical suspended ceilings and two Memorandums of Understanding. The Memorandums have to do with electrical floor assembly (Sippican) and electrical automated inter-office transporter (Telelift).

The Joint UBCJA-IBEW Committee has given these items thorough study and I have reviewed all the aspects of these particular agreements. These settlements, in my opinion, are in the best interests of the construction industry and the two Unions involved. All ceiling jobs in progress prior to March 1, 1974 that fall under the old agreement shall be completed as started. The effective date of the two Memorandums is also March 1, 1974.

Best wishes.

Fraternally yours,
WILLIAM SIDELL
General President
UBJCA

CHP:jw
OPEIU #2
Enclosures

Fraternally yours,
CHARLES H. PILLARD
International President
IBEW

AGREEMENT Installation and Erection of Luminous and Acoustical Suspended Ceilings

This Agreement entered into by and between the International Brotherhood of Electrical Workers and the United Brotherhood of Carpenters and Joiners of America is the result of continued meetings by the parties in a sincere effort to eliminate jurisdictional disputes which result in costly work stoppages and reduced productivity. During the deliberations the parties carefully reviewed the agreement entered into by the two organizations dated February 1, 1956 and its subsequent amendment of February 1, 1958, and considering the technological innovations and industry pattern which has evolved since that time and in recognition of the basic premise that Carpenters erect and install ceiling systems and Electricians erect and install electric fixtures and items directly related thereto do hereby void the agreements of February 1, 1956 and its amendment of February 1, 1958, and enter into this Agreement which shall become effective March 1, 1974.

1. Typical suspended acoustic ceilings shall be installed by members of the United Brotherhood of Carpenters and Joiners of America. Installation of electric fixtures and all work in connection with same is the work of the International Brotherhood of Electrical Workers.

2. Grid systems supporting the finished ceiling materials and electric fixtures shall be installed by Carpenters. Any additional supports (including T's and hangers) required to support light fixtures only shall be installed by Electricians who shall also mechanically secure and electrically connect the light fixtures.

3. Suspended electric fixtures forming part of the grid system, including fixture supports, inserts and hangers, shall be installed by Electricians. The remainder of the grid system shall be installed by Carpenters.

4. Ceiling systems below and supported independently of the light fixtures shall be installed in their entirety by Carpenters.

5. Inserts and hangers for combination T raceways, or for pre-wired dual purpose T raceways, shall be installed by Carpenters. Electricians will handle and install the T raceway to the extent of making one twist of the support wire as a tem-

porary measure to hold the T raceway in place. Completion of the general ceiling installation, including aligning, leveling and final securing of the T raceway on such hangers shall be performed by Carpenters.

6. Diffusers or louvers directly attached to light fixtures and those not placed as a continuing part of the general ceiling installation shall be installed by Electricians. After ceiling system has been completed any removal and replacement of diffusers or louvers in order to complete the electrical work shall be done by Electricians.

The above understanding should be used in the most practical common sense manner on both man-power and the equipment involved. If a jurisdictional dispute arises which cannot be settled by local representatives, or a question of interpretation arises as to the meaning or intent of this Agreement, it shall be referred immediately to the respective International Presidents for settlement by the Jurisdictional Administrators or assignment of representatives to adjust as per the Agreement. Work stoppages are not to be permitted pending such resolution.

The employer will be expected to make the initial work assignments in conformity with the terms of this Agreement. If a work stoppage should occur, the contractor should give prompt notice to all parties to this Agreement and should continue his operation. It is agreed that the respective International Presidents will immediately direct the offending local to resume work.

IBEW—UBCJA

MEMORANDUM OF UNDERSTANDING

The technological changes in the construction industry with the introduction of new materials, new concepts, complex equipment and changing methods of installation require our continuing attention. Therefore, the following two (2) Understandings are entered into for the purpose of eliminating jurisdictional disputes and promoting harmony and cooperation on the work site.

1. Electrical floor assembly. (Sippican)

The initial unloading of the active and filler floor panels shall be performed by a composite crew of equal number.

The handling and installation of the active electrical floor panels, electrical raceways, electrical conductors and all other electrical components shall be performed by the IBEW.

The handling, cutting and installation of the filler floor panels and floor covering shall be performed by the UBCJA.

2. Electrical Automated Inter-office Transporter. (Telelift)

The unloading, handling and installing of the electrical conductor sections, electrical components, supports, brackets and all electrical connections shall be performed by IBEW.

The unloading, handling and installing of fire doors and non-energized stations shall be performed by UBCJA.

The above Understandings should be used in the most practical, common sense manner on man-power, materials and equipment.

/s/ WILLIAM SIDELL
General President
United Brotherhood of
Carpenters and
Joiners of America

January 29, 1974
Date

/s/ CHARLES H. PILLARD
International President,
International
Brotherhood of
Electrical Workers

January 29, 1974
Date

WILLIAM SIDELL,
General President
United Brotherhood of
Carpenters and
Joiners of America

January 29, 1974
Date

CHARLES H. PILLARD,
International President,
International
Brotherhood of
Electrical Workers

January 29, 1974
Date